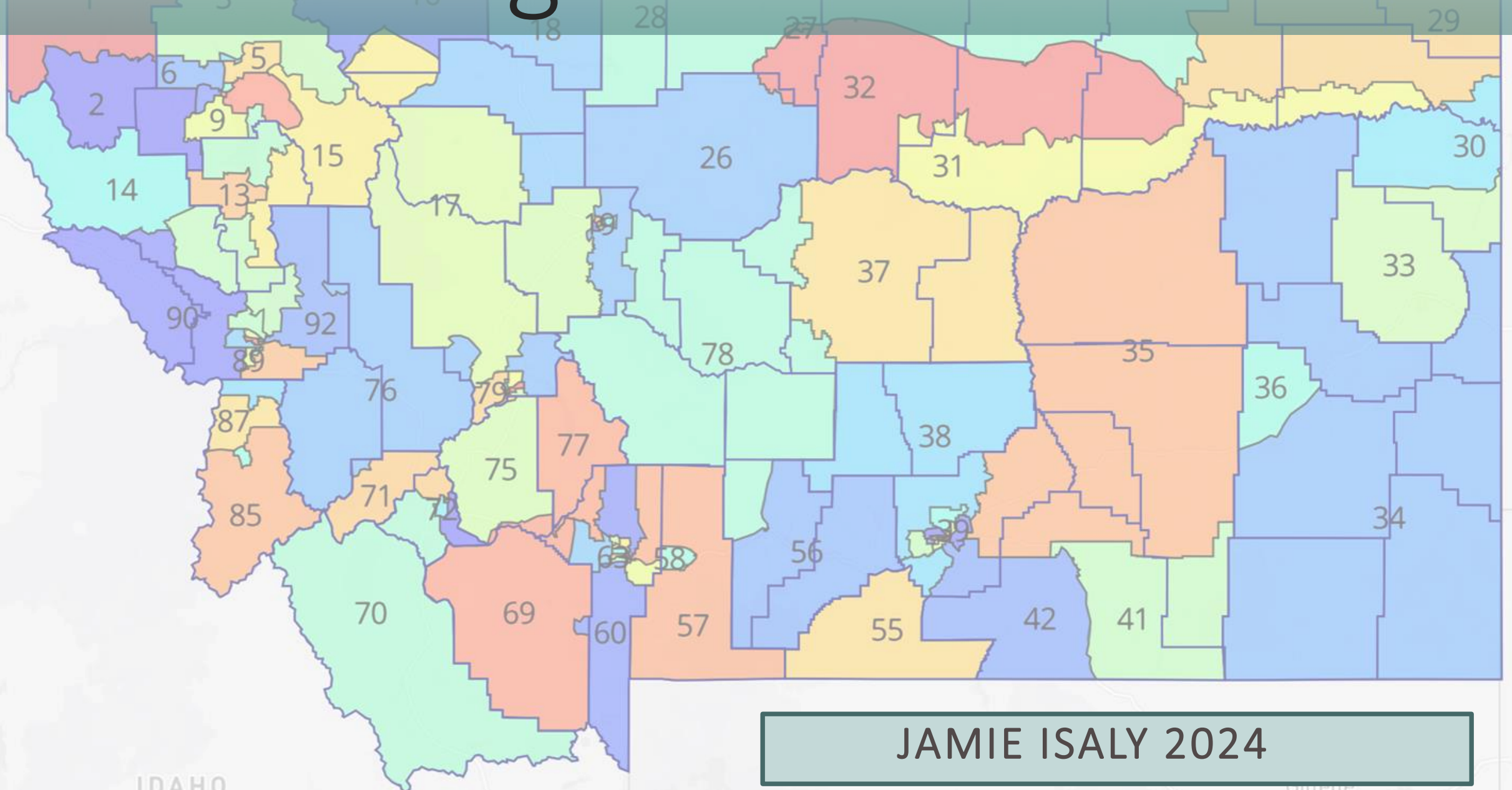


Redistricting Montana



JAMIE ISALY 2024

General Information

- ❖ Montana goes through the redistricting process every ten years, after the national census is taken.
- ❖ Districts are drawn so as to equalize the population numbers of each **Legislative district**.
 - There are **100** House Districts
 - 2 adjoining House districts are then combined to create **50** Senate districts.
 - House terms last 2 years, with term limits of 4 terms (8 years).
 - Senate terms last 4 years, with term limits of 2 terms (8 years).
- ❖ **Montana** currently has **two congressional districts**. The number of districts is reapportioned every ten years based on the state's population as determined by the United States census.
 - Montana had two districts from 1913 to 1993, and one at large district from 1993 to 2023
 - Since 2023, It has regained two distinct congressional districts

Montana Population Data

❖ The Montana Population, Census, April 1, 2020: **1,084,225**

The population of Montana in **2023 was 1,132,812, a 0.88% increase from 2022.**

The population of Montana in 2022 was **1,122,878**, a **1.49% increase** from 2021.

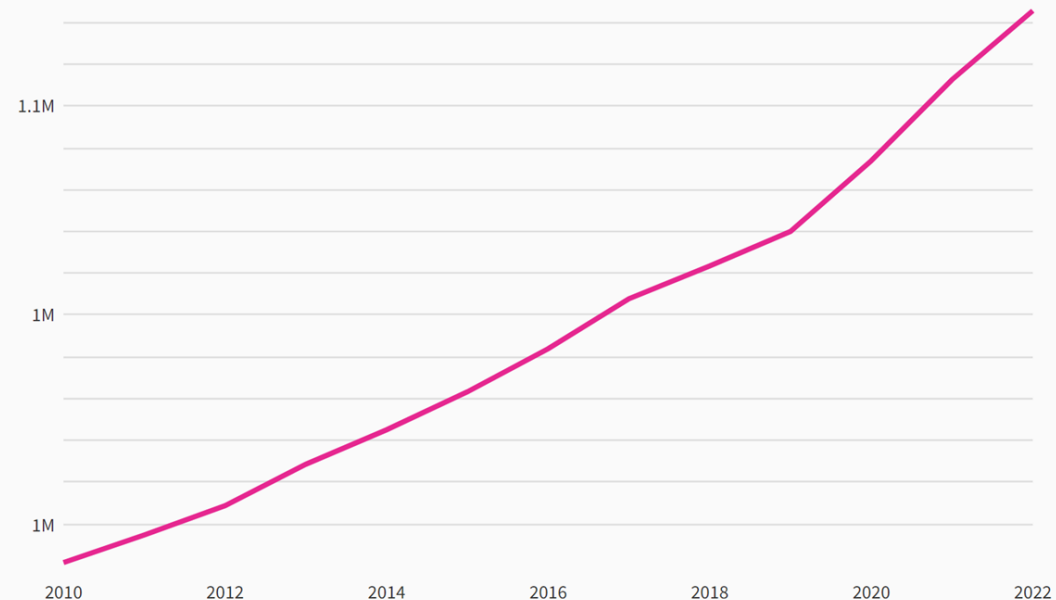
The population of Montana in 2021 was **1,106,366**, a **1.76% increase** from 2020.

The population of Montana in 2020 was **1,087,211**, a **1.6% increase** from 2019.

How many people live in Montana?

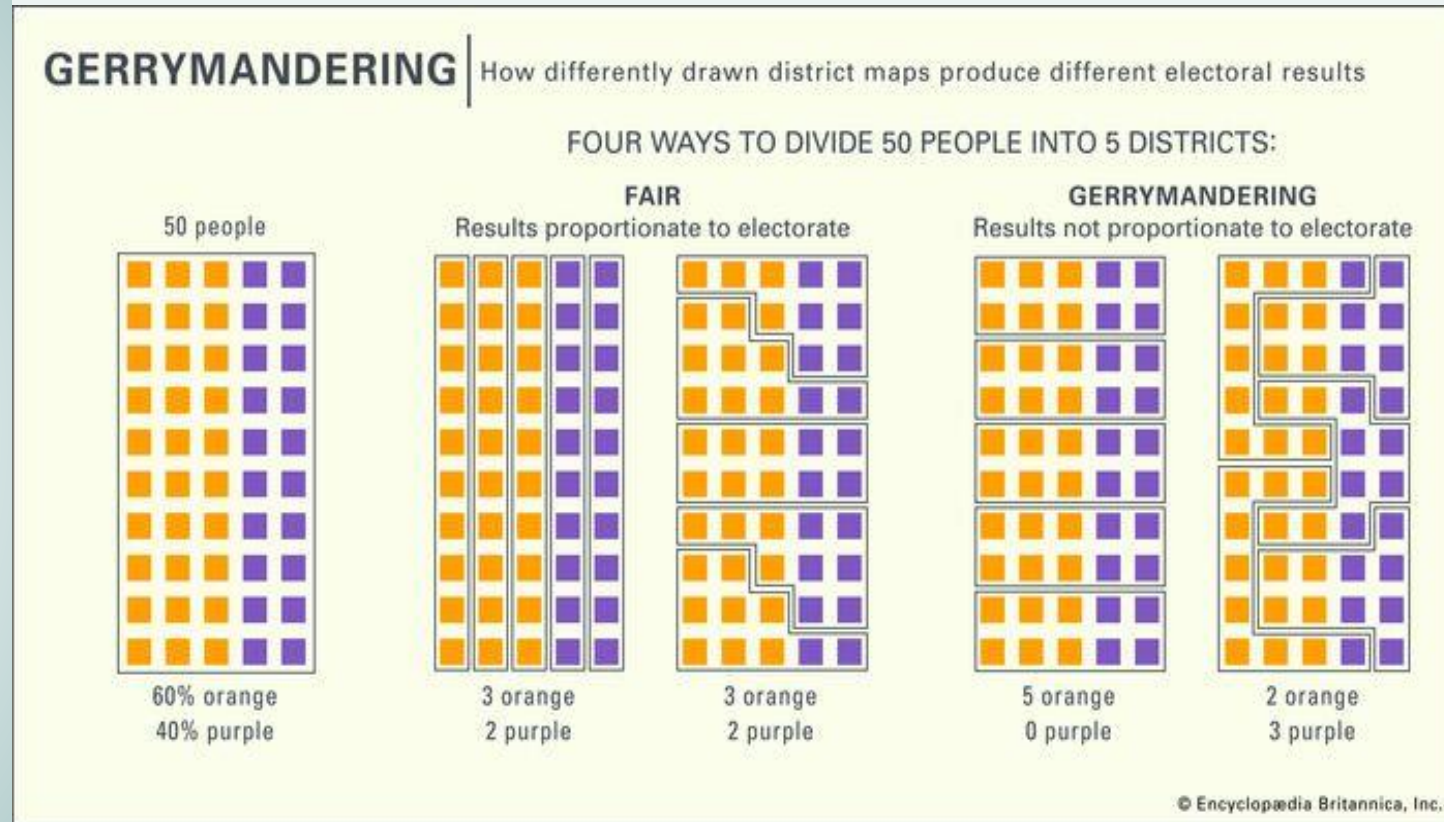
Montana's population **grew 13.3%** from the **990,730** people who lived there in **2010**. For comparison, the population in the US **grew 7.7%** during that period.

Population in Montana



What is Gerrymandering?

Gerrymandering, in U.S. politics, the practice of drawing the boundaries of electoral districts in a way that gives one political party an unfair advantage over its rivals (political or partisan gerrymandering) or that dilutes the voting power of members of ethnic or linguistic minority groups (racial gerrymandering). *Britannica*



Redistricting Process

- **Montana Code Annotated 2023**
- **THE CONSTITUTION OF THE STATE OF MONTANA**
- **ARTICLE V. THE LEGISLATURE**
- **Part V. THE LEGISLATURE**
- **Districting And Apportionment**

Section 14. Districting and apportionment. (1) The state shall be divided into as many districts as there are members of the house, and each district shall elect one representative. Each senate district shall be composed of two adjoining house districts, and shall elect one senator. Each district shall consist of compact and contiguous territory. All districts shall be as nearly equal in population as is practicable.

(2) In the legislative session following ratification of this constitution and thereafter in each session preceding each federal population census, a commission of five citizens, none of whom may be public officials, shall be selected to prepare a plan for redistricting and reapportioning the state into legislative districts and a plan for redistricting the state into congressional districts. The majority and minority leaders of each house shall each designate one commissioner. Within 20 days after their designation, the four commissioners shall select the fifth member, who shall serve as chairman of the commission. If the four members fail to select the fifth member within the time prescribed, a majority of the supreme court shall select him.

(3) Within 90 days after the official final decennial census figures are available, the commission shall file its final plan for congressional districts with the secretary of state and it shall become law.

(4) The commission shall submit its plan for legislative districts to the legislature at the first regular session after its appointment or after the census figures are available. Within 30 days after submission, the legislature shall return the plan to the commission with its recommendations. Within 30 days thereafter, the commission shall file its final plan for legislative districts with the secretary of state and it shall become law.

(5) Upon filing both plans, the commission is then dissolved.

History: Amd. Const. Amend. No. 14, approved Nov. 6, 1984.

Redistricting Process *continued*

(1) The state shall be divided into as many districts as there are members of the house, and each district shall elect one representative. Each senate district shall be composed of two adjoining house districts, and shall elect one senator. **Each district shall consist of compact and contiguous territory. All districts shall be as nearly equal in population as is practicable.**

(2) In the legislative session following ratification of this constitution and thereafter in each session preceding each federal population census, a commission of five citizens, none of whom may be public officials, shall be selected to prepare a plan for redistricting and reapportioning the state into legislative districts and a plan for redistricting the state into congressional districts. The majority and minority leaders of each house shall each designate one commissioner. Within 20 days after their designation, the four commissioners shall select the fifth member, who shall serve as chairman of the commission. If the four members fail to select the fifth member within the time prescribed, a majority of the supreme court shall select him.

Redistricting Process *continued*

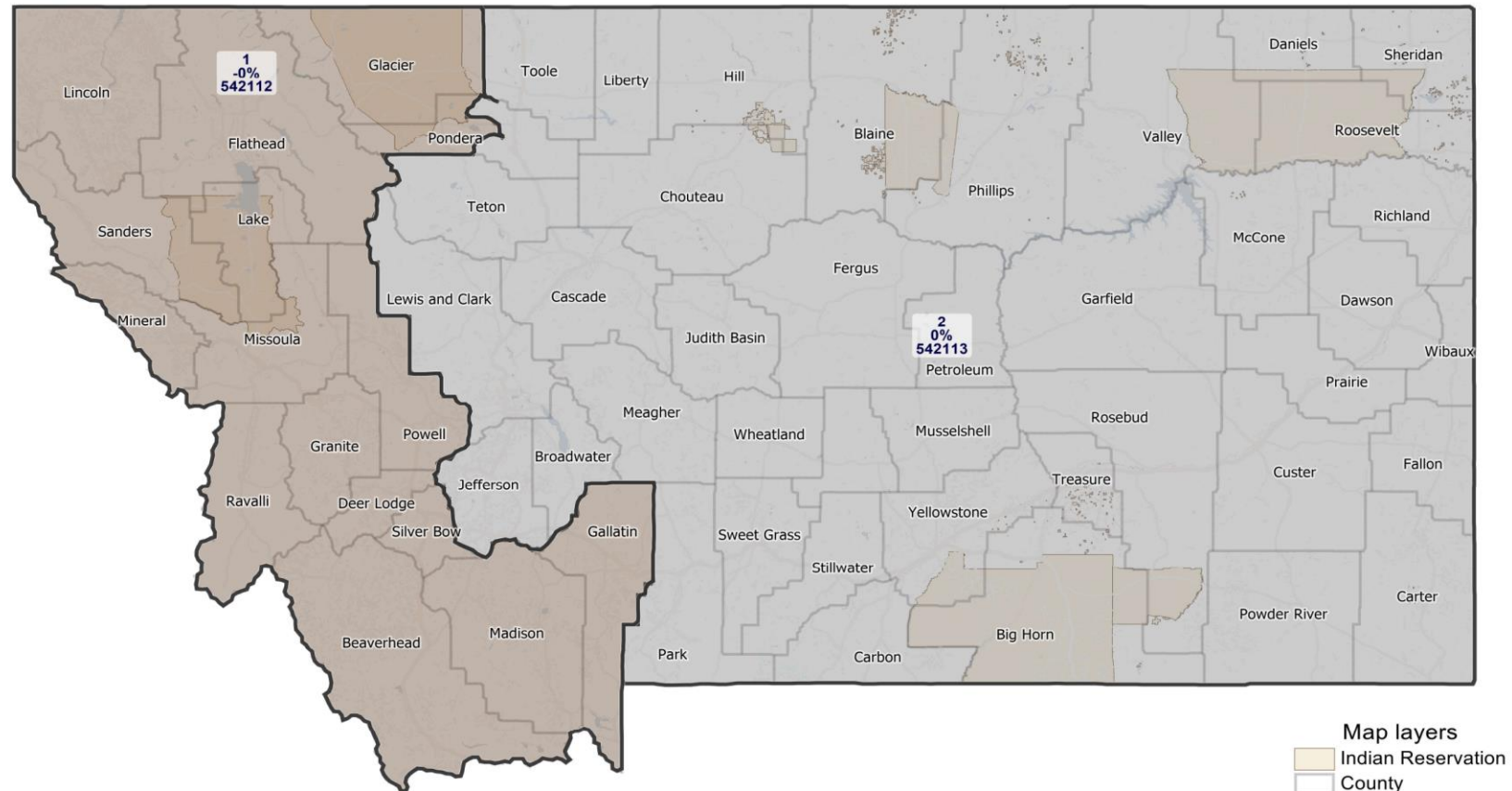
Article V

Section 14

(3) Within 90 days after the official final decennial census figures are available, the commission shall file its final plan for congressional districts with the secretary of state and it shall become law.

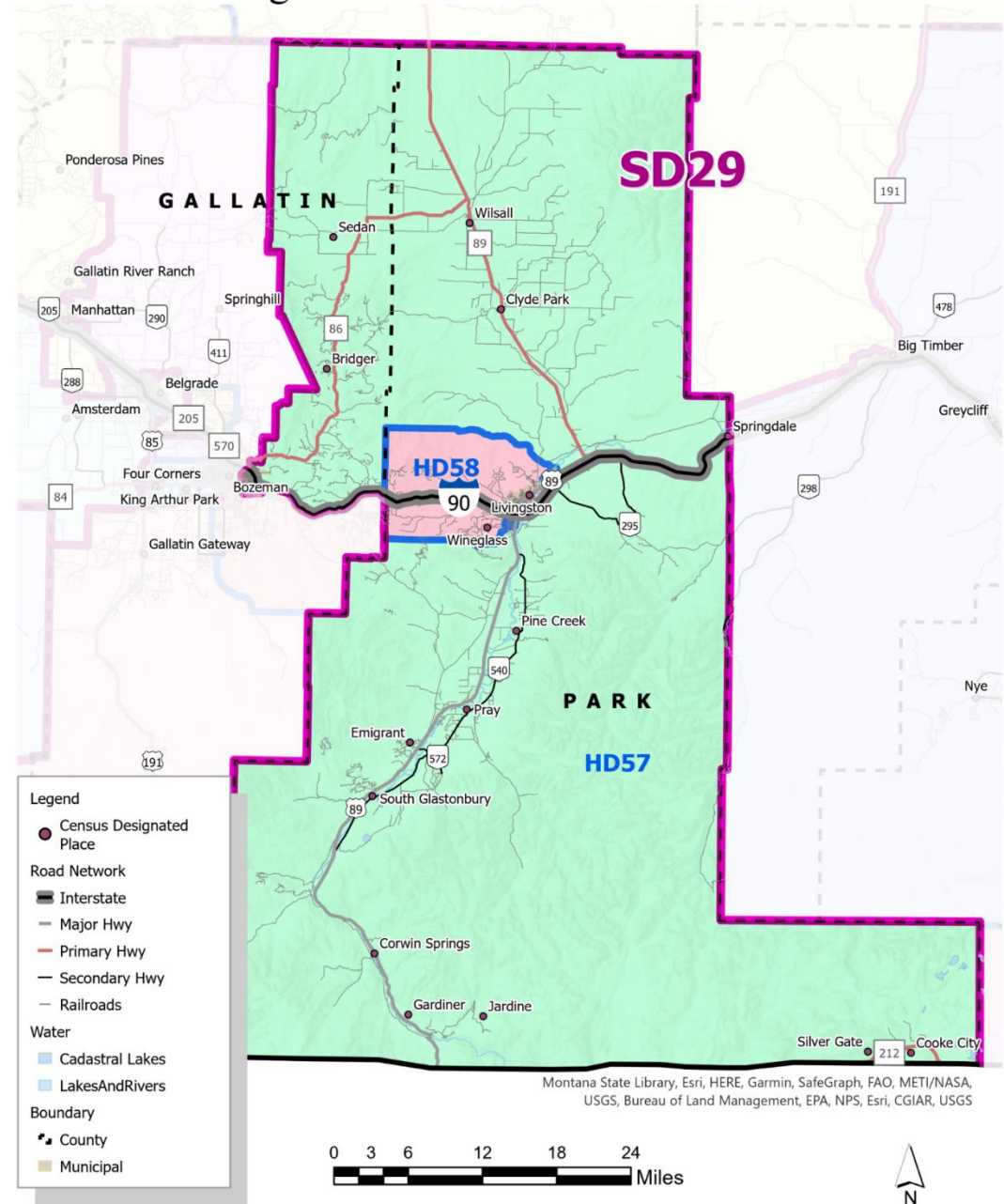
Montana Congressional Districts

Adopted November 12, 2021



New...
House District 57
And...
House District 58
Now Make up...
Senate District 29

Senate District 29 2024 - 2032 Legislative Districts



House District 58

2024 - 2032 Legislative Districts

House District
58...
Changed very
little with the
redistricting.

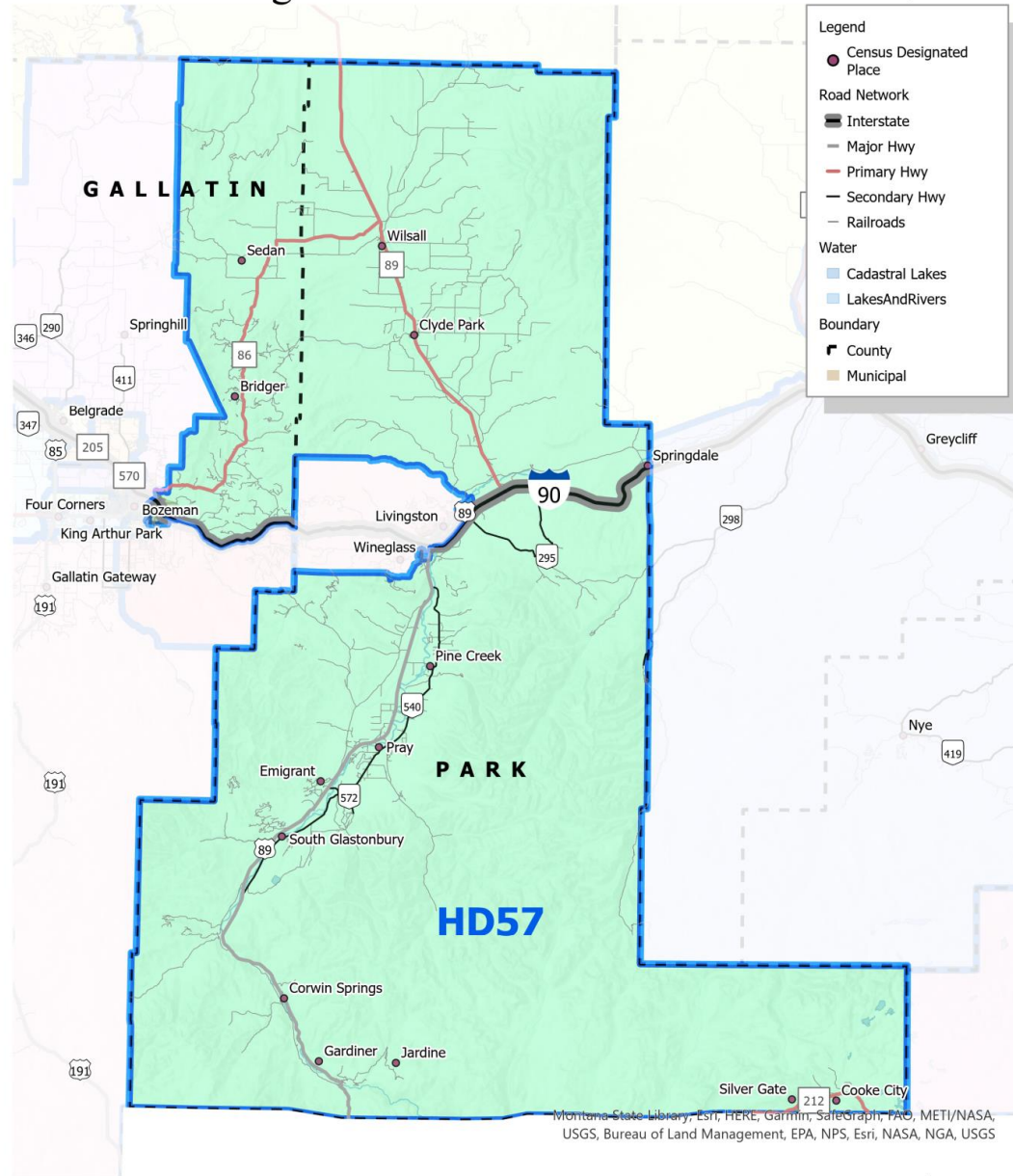


House District 57 2024 - 2032 Legislative Districts

House District 59...Now 57,
and
Senate District 30...Now 29
Did change significantly.

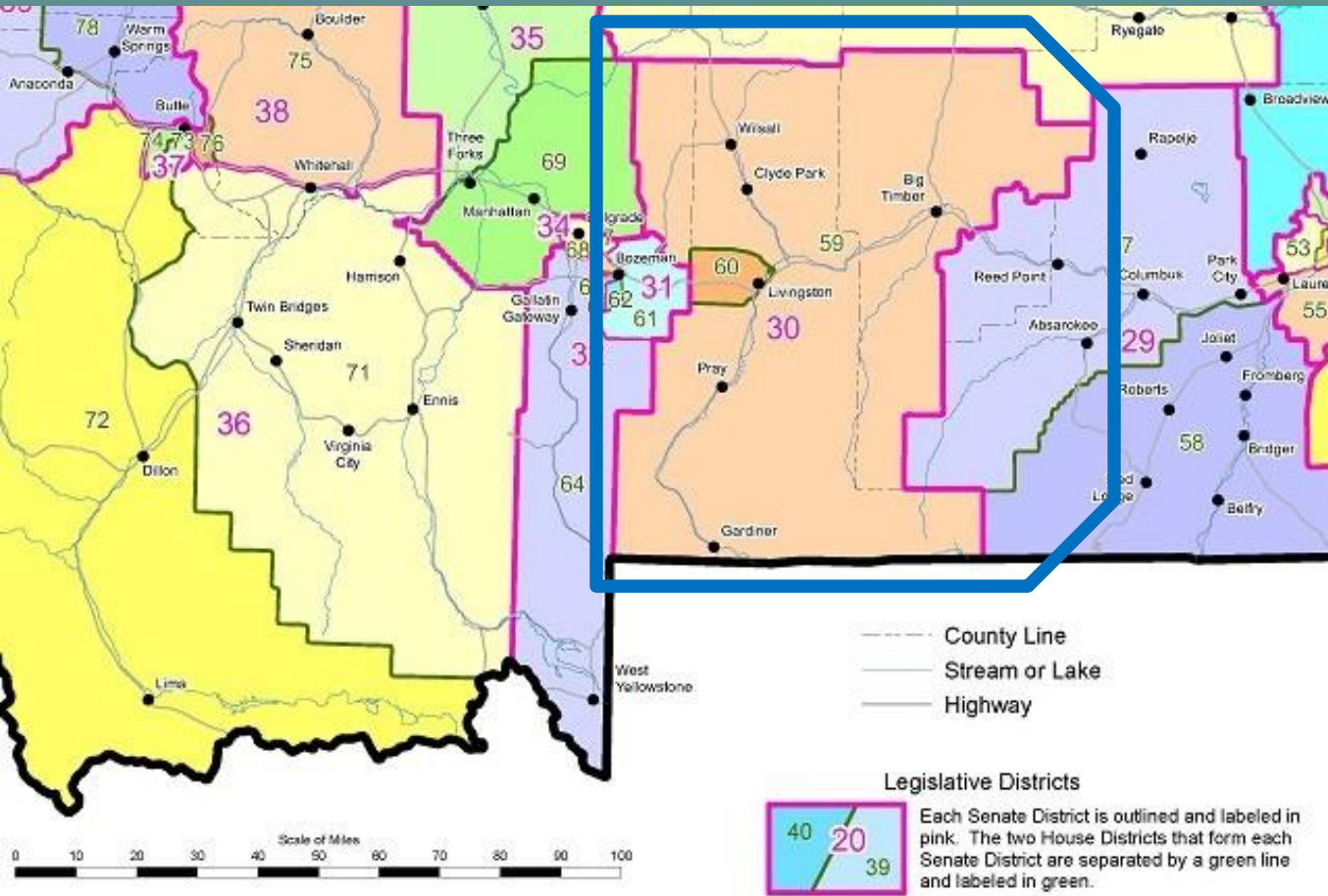
They no longer include Big
Timber or any of Sweet
Grass County.

Instead they stretch more
into Gallatin County
including East Bozeman.

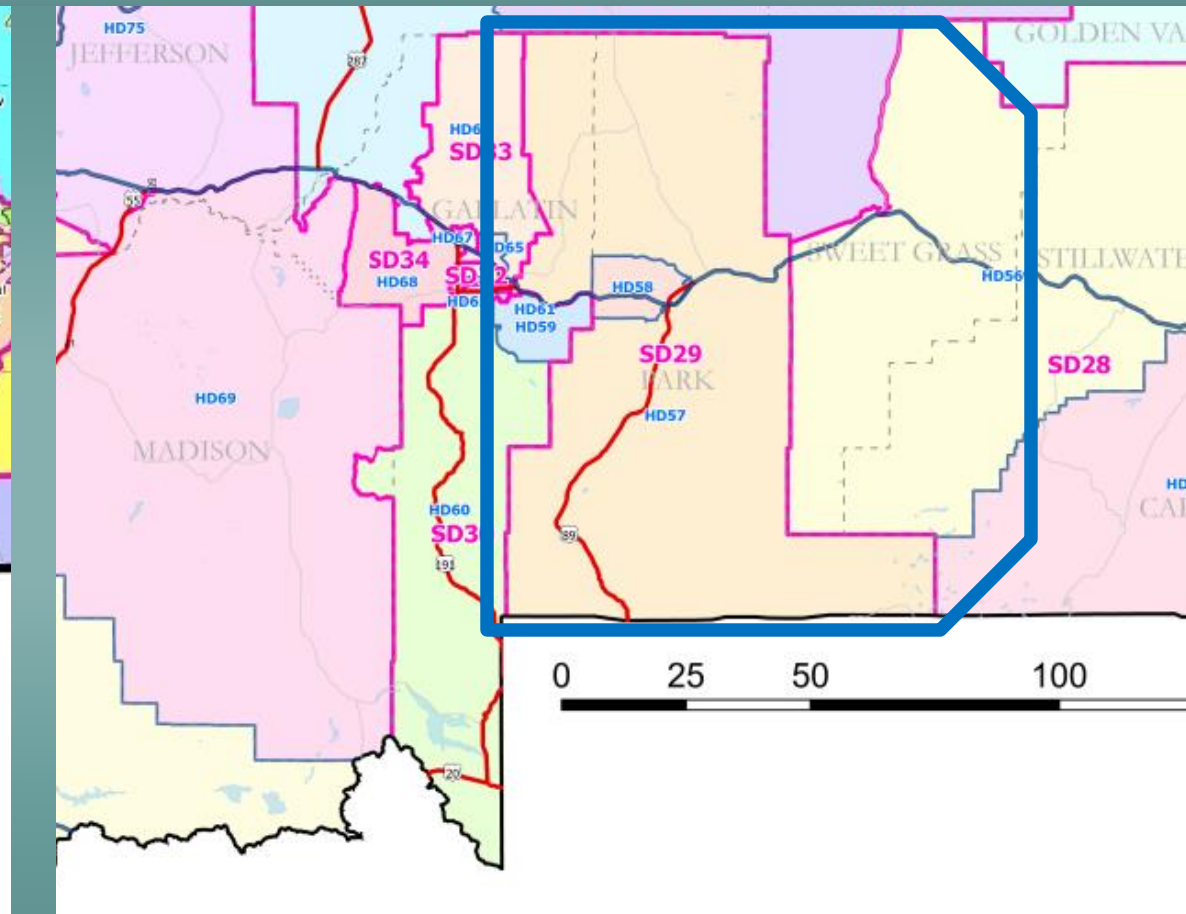


Local Legislative Maps/Districts

Notable Changes...



2014 – 2024 Map



2024 – 2032 Map

Local Legislative Maps/Districts

Notable Changes...

House District 60 will now be House District 58

Current Incumbent **Laurie Bishop (D)**

Laurie will be termed out after this year, so is considered an open seat.

Current candidates:

Jason Gunderson (R)

Jamie Isaly (D)



House District 59 will now be House District 57

Current Incumbent **Marty Malone (R)**

Current Candidates:

Marty Malone (R)

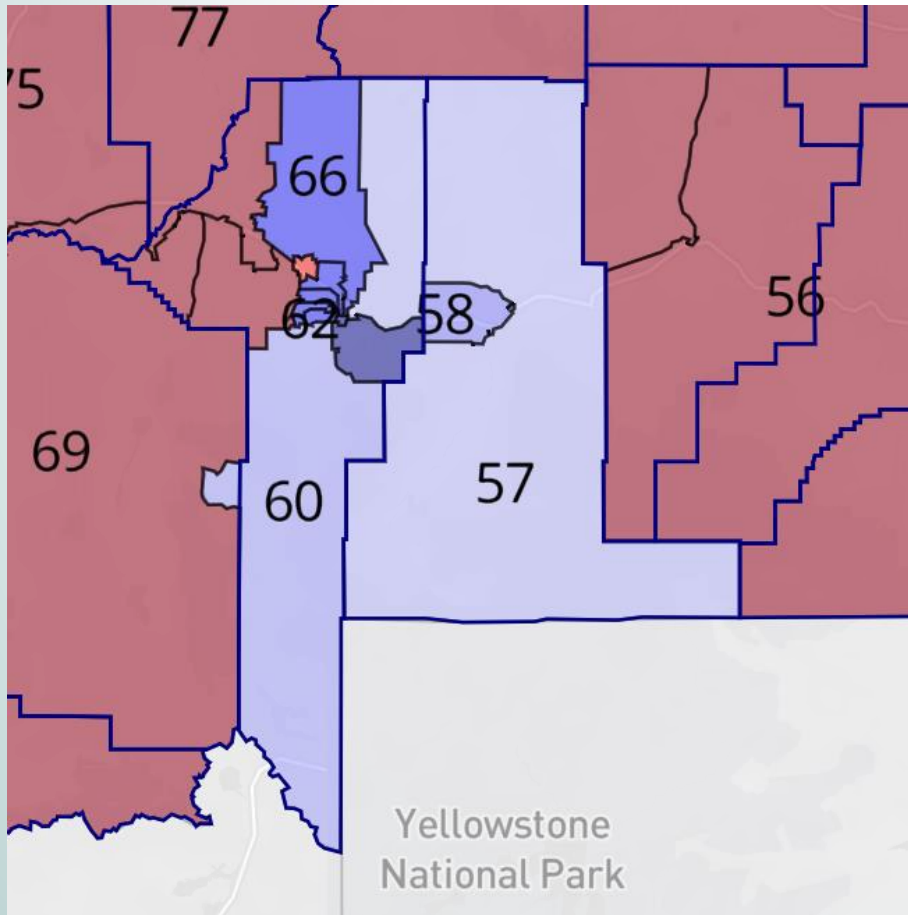
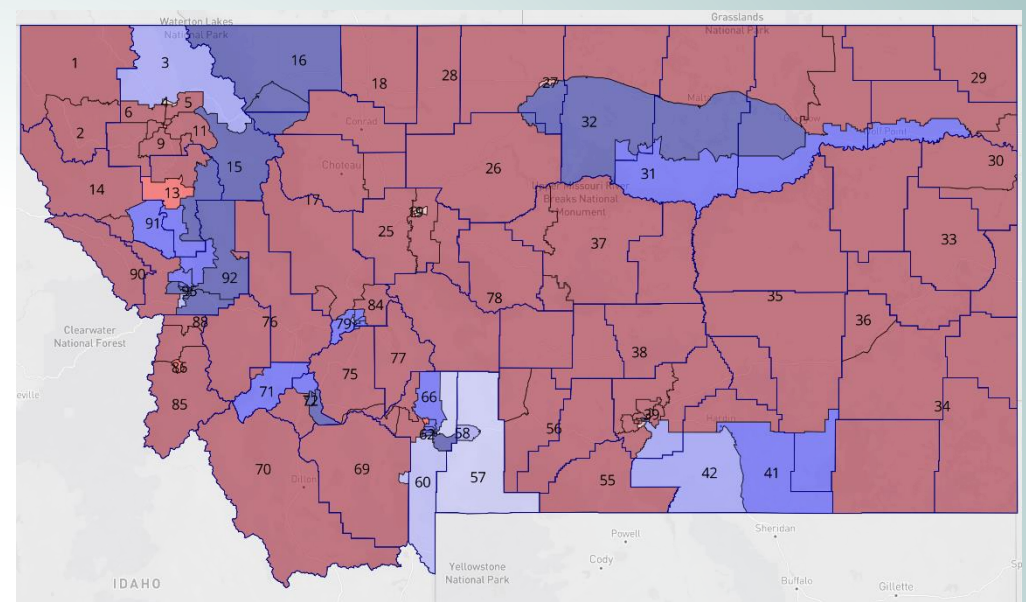
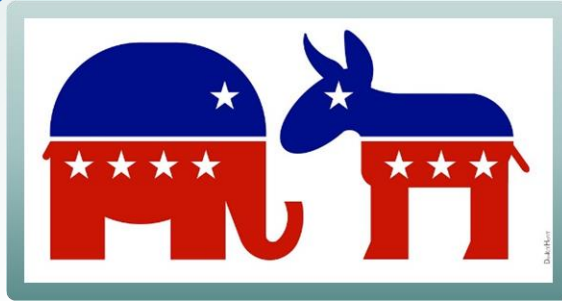
Scott Rosenzweig (D)

Senate District 30 will now be Senate District 29 (combines HD-57 & 58)

Current Incumbent – **John Esp (R)**

This 4 year term does not come up for reelection until 2026

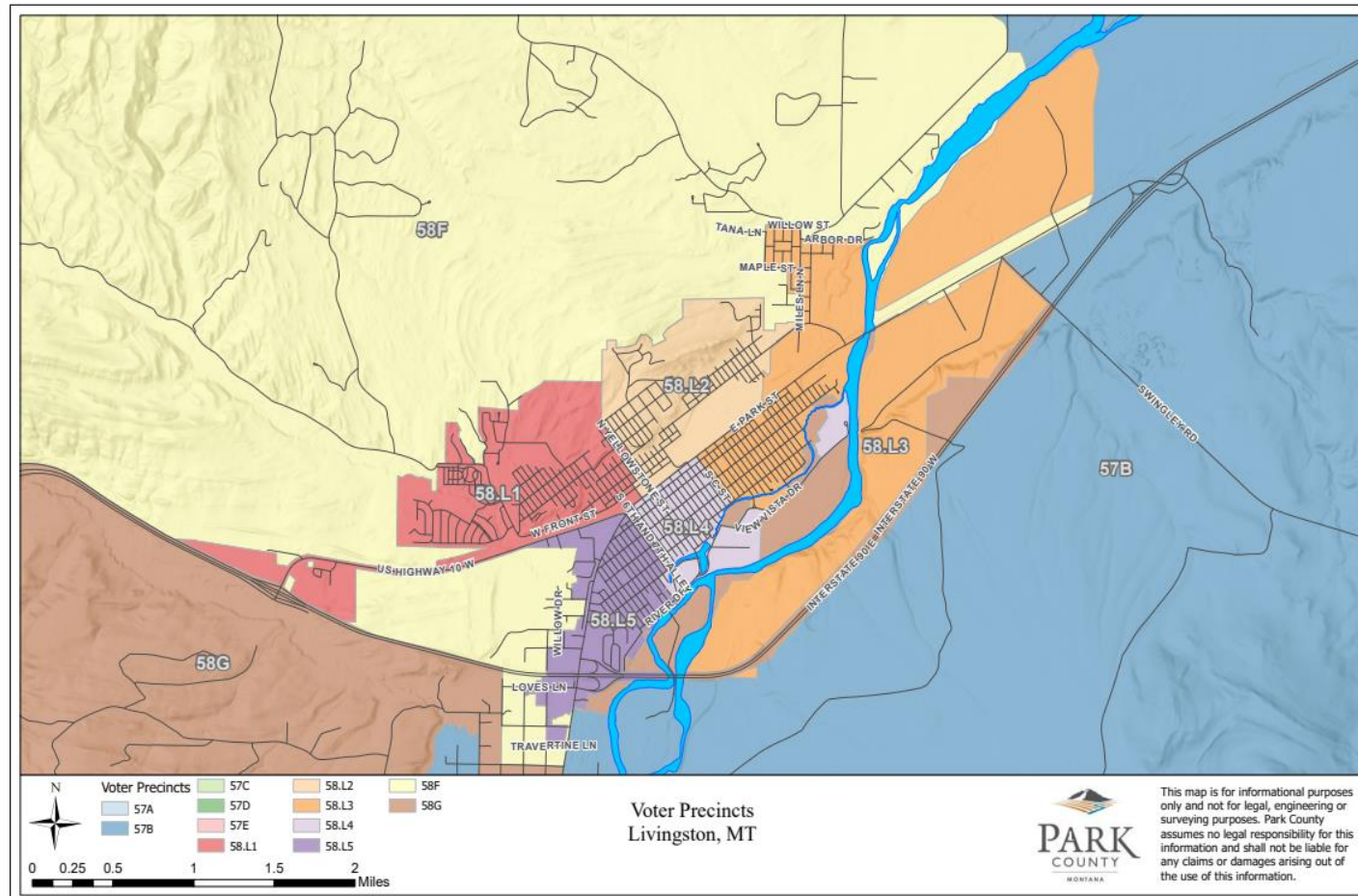
Partisan Lean



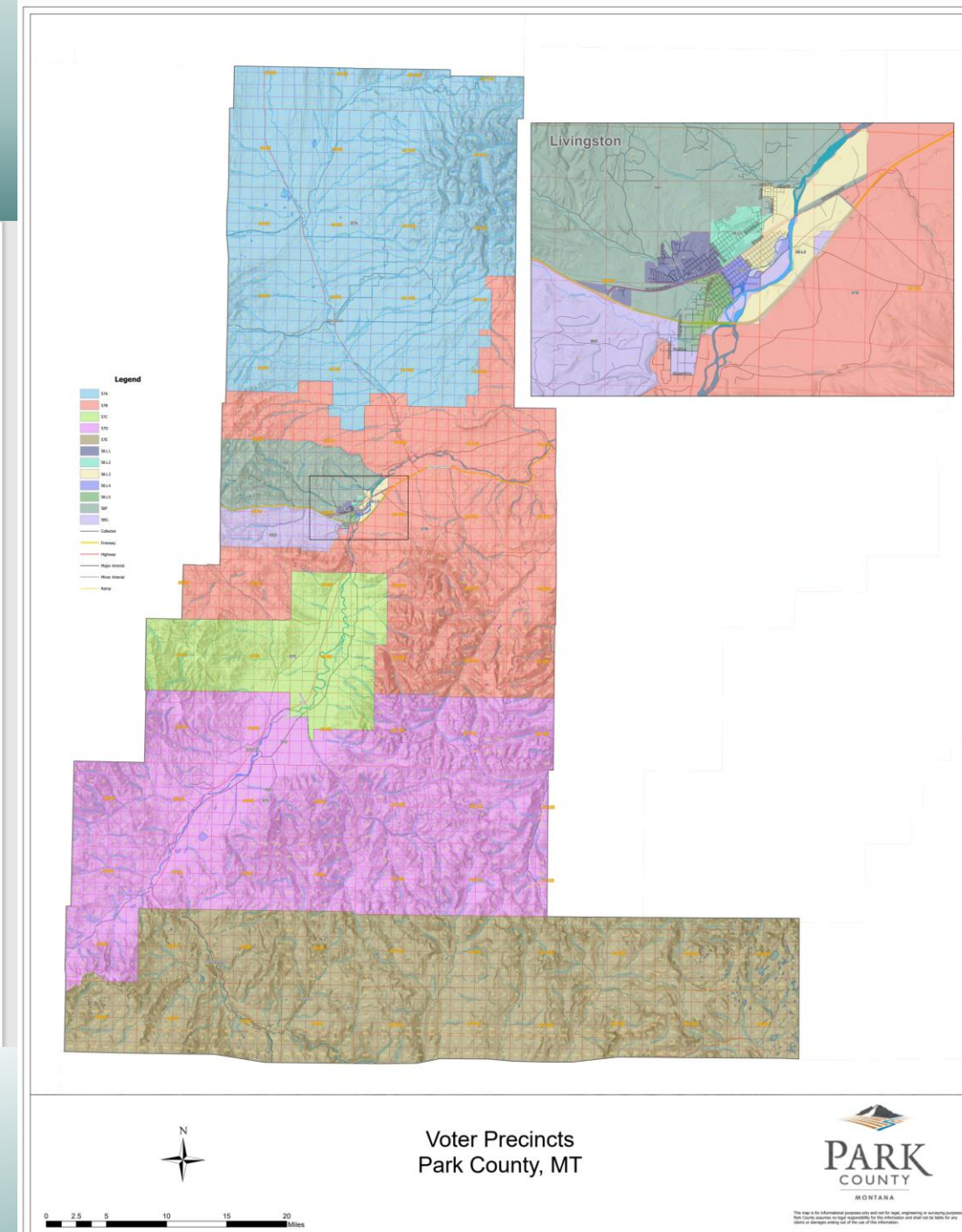
It is interesting to note that HD-59 & SD-30 were strong RED districts. The new map now shows HD-57 & SD-29 are now rated as slightly Blue.

HD-60 which is now HD-58 changed very little in size, location and geographically, and remains a moderately blue district.

New Districts Mean New Voter Precincts.



- Check Voter Registration Cards
- Park County Clerk & Recorder's Office
- Voter Information Booth



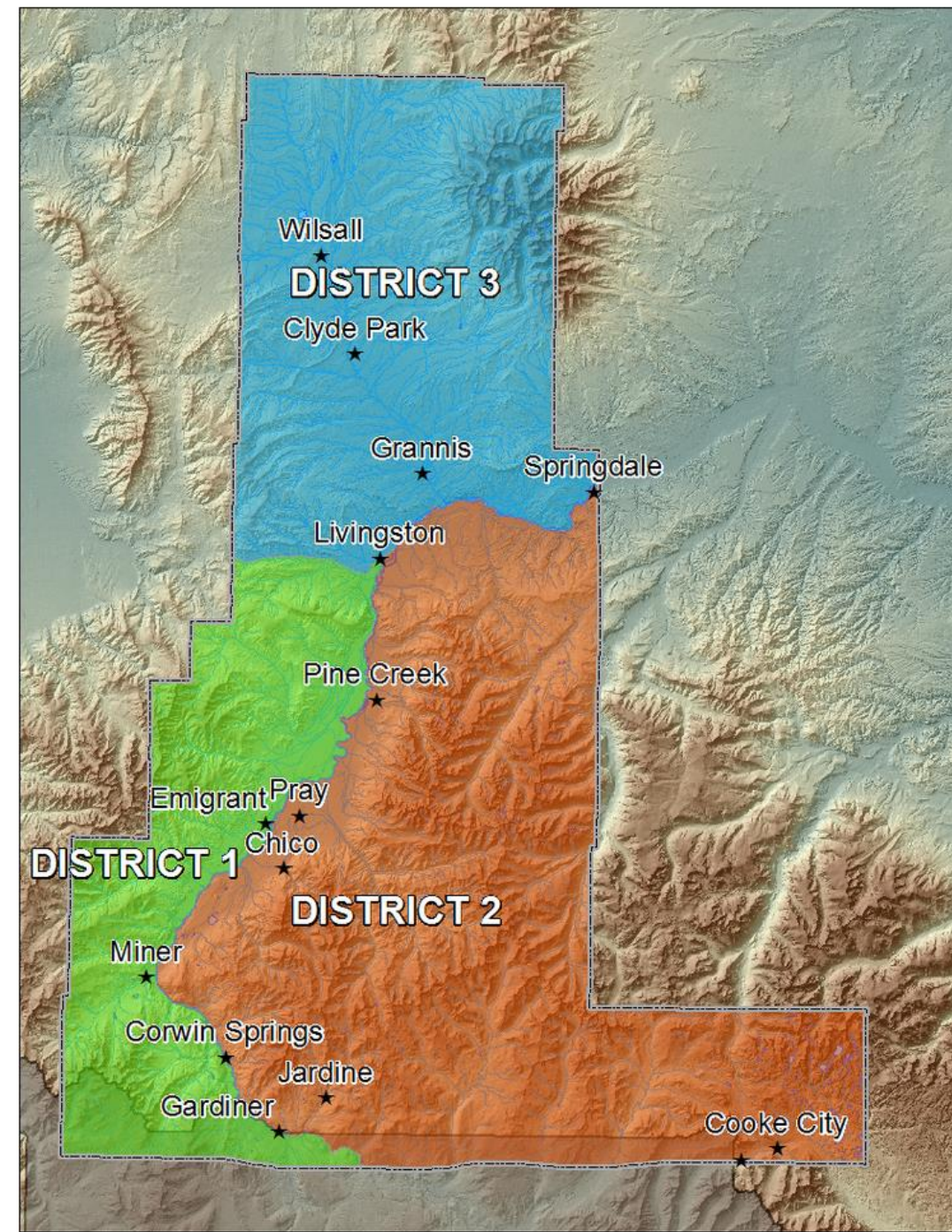
Park County Commissioner District Map

DISTRICT 1- MIKE STORY
DISTRICT 2- BRYAN WELLS
DISTRICT 3- CLINT TINSLEY

Montana Code Annotated 2023
TITLE 7. LOCAL GOVERNMENT
CHAPTER 4. OFFICERS AND EMPLOYEES
Part 21. County Commissioners
Division Of County Into Commissioner Districts

7-4-2102. Division of county into commissioner districts. (1) In each county of the state, following each federal decennial census, the board of county commissioners shall divide their respective counties into as many commissioner districts as there are county commissioners and ensure that the districts are as compact and equal in population and area as possible. The apportionment may take place at any time for the purpose of equalizing in population and area the commissioner districts. However, a commissioner district may not at any time be changed to affect the term of office of any county commissioner who has been elected. A change in the boundaries of any commissioner district may not be made between the date that falls 6 months before a county commissioner primary election and the date of the general election.

(2) The district judge or judges of the county shall review the action of the commissioners to determine whether or not the action meets the requirements of this section.



Resources & Information



[MDAC – Developing Legislative Districts for Montana \(mtredistricting.gov\)](http://mtredistricting.gov)

Montana Secretary of State

[Christi Jacobsen - Montana Secretary of State - Official Montana Secretary of State Website - Christi Jacobsen \(sosmt.gov\)](http://sosmt.gov)



[Explaining the why and the where of MT's new legislative districts \(montanafreepress.org\)](http://montanafreepress.org)

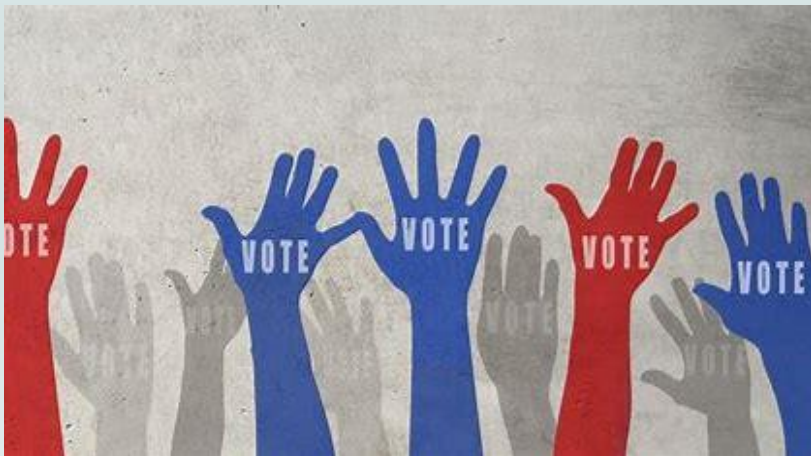


[Park County Website
www.ParkCounty.org](http://www.ParkCounty.org)

***Montana
Primary
Election
Tuesday
June 4th
2024***



***Montana
General
Election
Tuesday
November 5th
2024***



Thanks For Attending!
See You at the Polls

